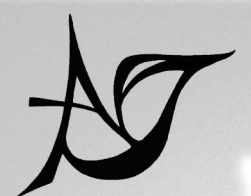


Nikolas (Allen) Jeleniauskas

# Симфонизм

Simfoniem

(2004)



Jelenas Music  
7507 Shea Rd. Pompey, NY 13138  
npallen@gmail.com  
www.jelenasmusic.com

# INSTRUMENTATION

## Transposed Score

(Instruments that sound at the octave or double octave are notated at their written pitch)

### 2 Flutes

second doubles Piccolo

### 2 Oboes

second doubles English Horn

### 2 Clarinets in B<sup>b</sup>\*

second doubles E<sup>b</sup> Clarinet

\* unless otherwise noted, Clarinets should not use vibrato in their tone unless directed to do so

### 2 Bassoons

second doubles Contrabassoon

### 4 Horns in F

### 3 Trumpets in C

### 2 Trombones

### 1 Bass Trombone

### Tuba

### 3 Percussion

### Timpani (32", 28")

### Harp

harmonics sound one octave higher than written

### Piano\*\* (see fig. 1.2)

### Strings

Minimum number of players:

Vln. 1 (7)

Vln. 2 (7)

Vla. (7)

Vc. (7)

Cb. (with c extension, 5)

If using players above minimum number, distribute assignments evenly for the most balanced effect (numbers in parenthesis on P.1 refer to player assignments)

### Percussion Key

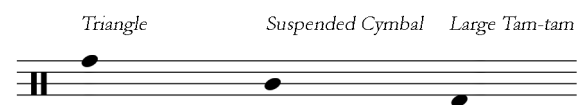
#### Percussion 1

Factory Whistle (approximate pitch, 1),  
Crotales (lower and upper octaves, shared with Pc. 2),  
Snare Drum, Vibraphone (F3-F6)



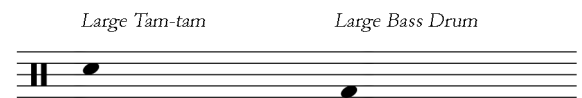
#### Percussion 2

Triangle, Suspended Cymbal, Large Tam-tam (shared with Pc. 3),  
Bass Marimba, Crotales (lower and upper octaves, shared with Pc. 1)



#### Percussion 3

Chimes, Large Bass Drum, Glockenspiel, Large Tam-tam (shared with Pc.2)



For a complete up-to-date biography please visit [www.jelenasmusic.com](http://www.jelenasmusic.com)

## Program Note

Completed in December 2004, this piece is a companion of sorts to my chamber work *Angels' Wings* as it shares much of the same musical and personal inspirations as well as compositional motivations. The piece germinates through the slow evolution of a cluster and its temporal development throughout the work, with melodic fragments juxtaposed against that 'sound mass'. The title reflects two aspects of the music, first the abstract qualities between conception and realization of a work and secondly, some of the Russian characteristics of the piece.

Duration: *16 minutes*

Transposed Score

Симфонизм  
simfoniem  
(2004)

Nikolas (Allen) Jeleniauskas  
(b.1982)

♩=62 Ethereal

Flute 1

Flute 2  
dbl. Piccolo

Oboe 1

Oboe 2  
dbl. English Horn

B♭ Clarinet 1

B♭ Clarinet 2  
dbl. E♭ Clarinet

Bassoon 1

Bassoon 2  
dbl. Contrabassoon

4/8 2/8 4/8 5/8 2/8 4/8

F Horn 1+3

F Horn 2+4

C Trumpet 1

C Trumpets 2+3

Trombones 1+2

Bass Trombone

Tuba

Percussion 1  
Factory W/ Beards  
Crotales  
Snare Drum  
Vibraphone

Percussion 2  
Triangle  
Suspended Cymbal  
Lamp Tom-tom  
Crotales  
Bass Maracas

Percussion 3  
Lamp Tom-tom  
Large Bass Drum  
Cajon/Conquistador  
Tubular Bells

Timpani

\* Note: natural harmonics sound where written

Harp  
let ring unless otherwise noted

Piano

4/8 ♩=62 Ethereal 2/8 4/8 5/8 2/8 4/8

String numberings refer to player assignments

Violin I (1)

Violin I (2+3)

Violin I (4+5)

Violin I (6+7)

Viola

Violoncello (1)

Violoncello (2+3)

Violoncello (4+5)

Violoncello (6+7)

Contrabass





21 Mournful (poco espressivo, tenuto ♩=62)

Fl.

Picc.

Ob.

E.H.

B♭ Cl.

B♭ Cl.

Bsn.

Bsn.

Hn. 1+3

Hn. 2+4

C Tpt. 1

C Tpt. 2+3

Tbn. 1+2

B. Tbn.

Tba.

Perc. 1  
*Crt.*

Perc. 2

Perc. 3

Timp.

Hp.

Pno.

21 Mournful (poco espressivo, tenuto ♩=62)

Vln. I

Vln. II (1)

Vln. II (2+3)

Vln. II (4+5)

Vln. II (6+7)

Vla.

Vc. (1)

Vc. (2+3)

Vc. (4+5)

Vc. (6+7)

Cb.

26

Fl. *p* *mp*

Picc.

Ob. *p*

E.H.

B♭ Cl. *pp*

B♭ Cl. *p* (breathy) *mp*

Bsn. *p* *mp*

Bsn.

Hn. 1+3

Hn. 2+4

C Tpt. 1

C Tpt. 2+3

Tbn. 1+2

B. Tbn.

Tba.

Perc. 1 *Crt.*

Perc. 2

Perc. 3

Timp.

Hp.

Pno.

26

Vln. I

Vln. II (1)

Vln. II (2+3)

Vln. II (4+5)

Vln. II (6+7)

Vla.

Vc. (1)

Vc. (2+3)

Vc. (4+5)

Vc. (6+7)

Cb.

5

34 ♩=78 Undulating

32

Fl. *mf* *p*

Picc.

Ob. *mp* *p* *pp*

E.H.

B♭ Cl. *mp* *p*

E♭ Cl. *mp* *p*

Bsn. *mp* *p*

Bsn.

5 6 4 5 4

\* Horns gradually stop or open from stopped respectively creating a half step gliss

Hn. 1+3 *pp* *mp*

Hn. 2+4 *pp* *mp*

C Tpt. 1

C Tpt. 2+3

Tbn. 1+2

B. Tbn.

Tba.

Perc. 1 *Cr.*

Perc. 2

Perc. 3

Timp.

Hp.

Pno.

5 6 4 5 4

34 ♩=78 Undulating

32

Vln. I

Vln. II (1) *gliss.* *p* *ppp*

Vln. II (2+3) *gliss.* *p* *ppp*

Vln. II (4+5) *gliss.* *p* *ppp*

Vln. II (6+7) *gliss.* *p* *ppp*

Vla.

Vc. (1) *gliss.* *p* *ppp* *p*

Vc. (2+3) *gliss.* *p* *ppp* *p*

Vc. (4+5) *gliss.* *p* *ppp* *p*

Vc. (6+7) *gliss.* *p* *ppp* *p*

Cb.

38

Fl. *p* *mp* *p*

Picc.

Ob. *p* *mp*

E.H. *p* *mp* *p*

B♭ Cl. *p* *mp* *p*  
normale

E♭ Cl. *p* *mp* *p*

Bsn. *p* *mp* *p*

Bsn.

3

4

Hn. 1+3 con sord. *p* *mf*

Hn. 2+4 con sord. *p* *mf*

C Tpt. 1 solo. *p*

C Tpt. 2+3 whispa mute *p* *mf*

Tbn. 1+2 whispa mute *p* *mf*

B. Tbn.

Tba.

Perc. 1 *Cr.*

Perc. 2

Perc. 3

Timp.

Hp.

Pno.

3

4

38

Vln. I

Vln. II (1) *p* *ppp*

Vln. II (2+3) *p* *ppp*

Vln. II (4+5) *p* *ppp*

Vln. II (6+7) *p* *ppp*

Vla. *mp* *p*

Vc. (1) *ppp* *p* *ppp*

Vc. (2+3) *ppp* *p* *ppp*

Vc. (4+5) *ppp* *p* *ppp*

Vc. (6+7) *ppp* *p* *ppp*

Cb. tutti *mp* *pp*



50 non vib. (glassy)

*mf* *f* *mf* *mf*

Picc. non vib. (glassy) *mf*

Ob. *mp* *pp* non vib. (glassy) *p*

E.H. *mp* *pp* non vib. (glassy) *p*

Bb Cl. *mp* *pp*

E<sup>b</sup> Cl. *mp* *pp*

Bsn. *mp* *pp*

Bsn.

Hn. 1+3 *p* *pp*

Hn. 2+4

C Tpt. 1

C Tpt. 2+3

Tbn. 1+2

B. Tbn.

Tba.

Perc. 1

Perc. 2

Perc. 3

Timp.

Hp.

Pno.

50

Vln. I

Vln. II (1) *p* *pp* *gliss.*

Vln. II (2+3) *p* *pp* *gliss.*

Vln. II (4+5) *p* *pp* *gliss.*

Vln. II (6+7) *p* *pp* *gliss.*

Vla.

Vc. (1) *p* *pp* *gliss.*

Vc. (2+3) *p* *pp* *gliss.*

Vc. (4+5) *p* *pp* *gliss.*

Vc. (6+7) *p* *pp* *gliss.*

Cb.

50 50 40 30 40

50 50 40 30 40

56

Fl. *pp*

Picc. *pp*

Ob. *pp* *ppp* *mp* *ppp*

E.H. *pp*

B♭ Cl. *pp*

E♭ Cl. *mp* *ppp*

Bsn.

Bsn.

Hn. 1+3

Hn. 2+4

C Tpt. 1

C Tpt. 2+3

Tbn. 1+2

B. Tbn.

Tba.

Perc. 1 *Crl.*

Perc. 2

Perc. 3

Timp.

Hp.

Pno.

Vln. I

Vln. II (1)

Vln. II (2+3)

Vln. II (4+5)

Vln. II (6+7)

Vla.

Vc. (1)

Vc. (2+3)

Vc. (4+5)

Vc. (6+7)

Cb.

*gliss.*

*mp* *pp*

*gliss.* *mp* *pp*

*gliss.* *mp* *pp*

*gliss.* *mp* *pp*

*gliss.* *mp* *p*

*gliss.* *mp* *p*

*gliss.* *mp* *p*

*gliss.* *mp* *p*

*gliss.* *mp* *p*

rolled *fz* *pp* *fz* *pp*

rolled *fz* *pp* *fz* *pp*

4/8

4/8

62

Fl.

Picc.

Ob.

E.H.

B♭ Cl.

E♭ Cl.

Bsn.

Bsn.

Hn. 1+3

Hn. 2+4

C Tpt. 1

C Tpt. 2+3

Tbn. 1+2

B. Tbn.

Tba.

Perc. 1 *Vih.*

Perc. 2 *B.Mar.*

Perc. 3

Timp.

Hp.

Pno.

Vln. I (1)

Vln. I (2+3)

Vln. I (4+5)

Vln. I (6+7)

Vln. II (1)

Vln. II (2+3)

Vln. II (4+5)

Vln. II (6+7)

Vla.

Vc. (1)

Vc. (2+3)

Vc. (4+5)

Vc. (6+7)

Cb.

**3**

**4**

**6**

**4**

*pp* senza sord.

*p*

*pp*

2nd Horn go offstage left

*pp*

*p*

*pp*

*pp*

*p*

*pp*

go offstage left

*mp*

*mp*

**3**

**4**

**6**

**4**

*p*

*mf*

*mp*

*mf*

*mp*

*mf*

*mp*

*mf*

*mf*

*mf*

*mf*

*mf*



74 Distant, Removed (non espressivo)

Fl.

Picc.

Ob.

E.H.

B♭ Cl.

B♭ Cl.

Bsn.

Bsn.

Hn. 1+3

Hn. 4

C Tpt. 1

C Tpt. 2+3

Tbn. 1+2

B. Tbn.

Tba.

Perc. 1  
Vib.

Perc. 2  
B.Mar.

Perc. 3  
T.T.  
B.D.

Timp.

Hp.

Pno.

6/8 4/8 6/8 4/8 5/8

74 Distant, Removed (non espressivo)

Vln. I (1)

Vln. I (2+3)

Vln. I (4+5)

Vln. I (6+7)

Vln. II

Vla.

Vc. (1)

Vc. (2+3)

Vc. (4+5)

Vc. (6+7)

Cb.

fp tutti

ppp

sub ppp

fp

fp tutti

fp tutti

fp tutti

fp

ppp

ppp

ppp

ppp

ppp





93 Warm (espressivo, filling instrument)

92

Fl. *pp* *p* *pp*

Picc. *pp* *p* *pp*

Ob. *ppp*

Ob. *ppp*

B♭ Cl. *ppp* *pp* *ppp*

B♭ Cl. *ppp* *pp* *ppp*

Bsn. *ppp* *pp* *ppp*

Bsn. *ppp* *pp* *ppp*

4  
8

Hn. 1+3 *ppp* *pp* *ppp* *pp* con sord.

Hn. 4 *pp* con sord.

C Tpt. 1 *pp* cup mute

C Tpt. 2+3 *pp* cup mute

Tbn. 1+2

B. Tbn.

Tba.

Perc. 1 *Vib.* *pppp* *p* *ppp*

Perc. 2 *B.Mar.* *pppp* *p* *ppp*

Perc. 3 *Chm.*

Timp.

Hp. *p* *ppp* not rolled

Pno.

4  
8

93 Warm (espressivo, filling instrument)

92

Vln. I

Vln. II

Vla.

Vc.

Cb.

♩=78 Rubato Tempo, chorale like

99 102

Fl. *p* *pp*

Fl. *mp* *pp*

Ob. *p* *pp*

B♭ Cl. *p* *pp*

B♭ Cl. *p* *pp*

Bsn. *p* *pp*

Bsn.

**3/4 4/8 5/8 6/8 3/4**

Hn. 1+3 *mp* *pp* *pp*

Hn. 4 *mp* *pp* *pp*

C Tpt. 1 *mp* *pp* *pp*

C Tpt. 2+3 *mp* *pp* *pp*

Hn. 2 *p* meditative

Tbn. 1+2 *p* meditative

B. Tbn. *p* meditative

Tba.

Perc. 1 *Vib.* *mp* *ppp*

Perc. 2 *B.Mar.* *mp* *ppp*

Perc. 3 *Cbm.*

Timp.

Hp.

Pno.

**3/4 4/8 5/8 6/8 3/4**

99 102

Vln. I *pp* *ppp*

Vln. II

Vla.

Vc.

Cb.

♩=78 Rubato Tempo, chorale like





124 poco marcato, espressivo (grieving)

120

Fl. 1 *mf* *f* *ff* *mp* *p*

Fl. 2 *mf* *f* *mp* *f* *mp*

Ob. *mf* *f* *ff* *mp* *p*

E.H. *mf* *f* *mp* *f* *mp*

B♭ Cl. *mf* *f* *mp* *f* *mp*

B♭ Cl. *mf* *f* *mp* *f* *mp*

Bsn. *mf* *f* *mp* *f* *mp*

Bsn. *mf* *f* *mp* *f* *mp*

4/8

3/4

poco marcato, espressivo (grieving)

senza sord.

1.

*mf*

*f*

*p*

poco marcato, espressivo (grieving)

harmon mute (stem in)

1.

*mf*

*f*

*p*

Offstage

Hn. 1+3 *sub. mp* *f* *p*

Hn. 4 *sub. mp* *f* *p*

C Tpt. 1 *mf*

Hn. 2 *mp* *f* *p* Return inside

Tbn. 1+2 *mp* *f* *p* Return inside

B. Tbn. *mp* *f* *p* Return inside

Tba. *mp* *f* *p*

Perc. 1 *Vib.* *mf* *pp* *f* *ppp*

Perc. 2 *B.Mar.* *mf* *pp* *f* *ppp*

Perc. 3 *Chm.* *mf* *pp* *f* *ppp*

Timp.

Hp.

Pno. *p* *ppp*

4/8

3/4

124

Vln. I (1) *ppp* *pp* *pppp*

Vln. I (2+3) *ppp* *pp* *pppp*

Vln. I (4+5) *ppp* *pp* *pppp*

Vln. I (6+7) *ppp* *pp* *pppp*

Cb.

127 130

Fl.

Picc.

Ob.

Ob.

B♭ Cl.

B♭ Cl.

Bsn.

Bsn.

Hn. 1

Hn. 3

Hn. 2+4

C Tpt. 1

C Tpt. 2+3

Tbn. 1+2

B. Tbn.

Tba.

Perc. 1  
Vib.

Perc. 2  
B. Mar.

Perc. 3  
Chm.

Timp.

Hp.

Pno.

Vln. I (1)

Vln. II (1)

Vla. (1)

Vc. (1)

Cb.

**3** **7** **4** **4** **3**

**8** **4** **4** **3**

*pp* < *p* > *pp* *sim.*

*p* *mf* *pp* < *mf* > *sim.* *pp* *f* *pp* < *p* > *pp* *sim.*

*p* *mf* *pp* < *mf* > *sim.* *pp* *f* *pp* < *p* > *pp* *sim.*

*p* *mf* *pp* < *mf* > *sim.* *pp* *f* *pp* < *p* > *pp* *sim.*

*p* *mf* *pp* < *mf* > *sim.* *pp* *f* *pp* < *p* > *pp* *sim.*

*p* *mf* *pp* < *mf* > *sim.* *pp* *f* *pp* < *p* > *pp* *sim.*

*f* *mp* senza sord. *fz* *mp* *p*

*p* *mf* *pp* < *mf* > *sim.* *pp* *f* *pp* < *mp* > *pp* *sim.*

*f* *mp* *fz* *mp* *p*

*f* *mp* senza sord. *mf* *p*

*fz* senza sord. *mp* *p*

*mf* *mp* *p*

*mf* *mp* *p*

*p*

*p*

prominent Chimes

*mp* *mf*

*mp* *mf*

*pp* *pp* *pp* *pp* *pp*

ord. solo, non vib

ord. solo, non vib

ord. solo, non vib

ord. solo, non vib

ord. solo, non vib

**3** **7** **4** **4** **3**

**8** **4** **4** **3**

127 130

138 rising in intensity

134

Fl. *mp* *mf* *p* *mf* *p* *mf* *p* *f* *p* *mf*<sup>3</sup> *f*

Picc. *mp* *mf* *p* *mp* *mf* *f* *p* *p* *mp* *p* *mp* *mf* *mf* *f*

Ob. *mp* *mf* *p* *mp* *mf* *f* *p* *p* *mp* *p* *mp* *mf* *mf* *f*

Ob. *mp* *mf* *p* *mp* *mf* *f* *p* *p* *mp* *p* *mp* *mf* *mf* *f*

B♭ Cl. *mp* *mf* *p* *mp* *mf* *f* *p* *p* *mp* *p* *mp* *mf* *mf* *f*

B♭ Cl. *mp* *mf* *p* *mp* *mf* *f* *p* *p* *mp* *p* *mp* *mf* *mf* *f*

Bsn. *mp* *mf* *p* *mp* *mf* *f* *p* *p* *mp* *p* *mp* *mf* *mf* *f*

Bsn. *mp* *mf* *p* *mp* *mf* *f* *p* *p* *mp* *p* *mp* *mf* *mf* *f*

Hr. 1 *mf* *mp* *fff* *f* *ff*

Hr. 3 *mp* *mf* *p* *mp* *mf* *f* *p* *p* *mp* *p* *mp* *mf* *mf* *f*

Hr. 2+4 *mf* *mp* *fff*

C Tpt. 1 *mf* *mp* *fff* *mf*<sup>3</sup> *p*

C Tpt. 2+3 *mp* *mf* *p* *mp* *mf* *f* *p* *p* *mp* *p* *mp* *mf* *mf* *f*

Tbn. 1+2 *mf* *mp* *fff*

B. Tbn. *mp* *p* *mf* *p* *p* *mp* *p* *mp* *mf* *mf* *f*

Tba. *mp* *p* *mf* *p* *p* *mp* *p* *mp* *mf* *mf* *f*

Perc. 1 *Vib.* *mf* *p* *mp* *p* *mf* *mp*

Perc. 2 *B.Mar.* *mf* *p* *mp* *p* *mf* *mp*

Perc. 3 *Cym.* *mp*

Timp.

Hp.

Pno.

Vln. I (1) *134 espressivo* *mp* *p* *mf* *138 tutti* *mp*<sup>3</sup> *mf*

Vln. II (1) *mp* *p* *mf* *p*

Vla. (1+2) *mp* *p* *mf* *p*

Vc. (1) *mp* *p* *mf* *p*

Cb.

4/8 3/8 4/8

4/8 3/8 4/8 rising in intensity

143 Diminishing

141

Fl. *ff* *mf* *mp*

Picc. *f* *f* *p* *subff* *p* *subff* *mp* *ff* *mf* *subff* *p* *subf* *pp*

Ob. *f* *f* *p* *subff* *p* *subff* *mp* *ff* *mf* *subff* *p* *subf* *pp*

Ob. *f* *f* *p* *subff* *p* *subff* *mp* *ff* *mf* *subff* *p* *subf* *pp*

B♭ Cl. *f* *f* *p* *subff* *p* *subff* *mp* *ff* *mf* *subff* *p* *subf* *pp*

B♭ Cl. *f* *f* *p* *subff* *p* *subff* *mp* *ff* *mf* *subff* *p* *subf* *pp*

Bsn. *f* *f* *p* *subff* *p* *subff* *mp* *ff* *mf* *subff* *p* *subf* *pp*

Bsn. *f* *f* *p* *subff* *p* *subff* *mp* *ff* *mf* *subff* *p* *subf* *pp*

Hn. 1 *ff* *f* *mf* *mp*

Hn. 3 *f* *f* *p* *subff* *p* *subff* *mp* *ff* *mf* *subff* *p* *subf* *pp*

Hn. 2+4 *f* *f* *p* *subff* *p* *subff* *mp* *ff* *mf* *subff* *p* *subf* *pp*

C Tpt. 1 *f* *f* *p* *subff* *p* *subff* *mp* *ff* *mf* *subff* *p* *subf* *pp*

C Tpt. 2+3 *f* *f* *p* *subff* *p* *subff* *mp* *ff* *mf* *subff* *p* *subf* *pp*

Tbn. 1+2 *f* *f* *p* *subff* *p* *subff* *mp* *ff* *mf* *subff* *p* *subf* *pp*

B. Tbn. *f* *f* *p* *subff* *p* *subff* *mp* *ff* *mf* *subff* *p* *subf* *pp*

Tba. *f* *f* *p* *subff* *p* *subff* *mp* *ff* *mf* *subff* *p* *subf* *pp*

Perc. 1 *Vib.* *mf* *mp* *f* *mp* *ff* *p* *Lr.* *mp*

Perc. 2 *B. Mar.* *mf* *mp* *f* *mp* *ff* *p*

Perc. 3 *B.D.* *Tam-tam* *mf* *f* *Lr.* *f*

Timp.

Hp. *mp*

Pno.

6/8 4/8 3/8 4/8 2/8 4/8

141

143 Diminishing

Vln. I *ff* *pp*

Vln. II

Vla.

Vc.

Cb.

148 *poco rit.* ..... *molto rit.*

Fl. *mf* *pp* *ppp < p > ppp*

Picc. *p < mf > p* *pp < mp > pp* *ppp < p > ppp*

Ob. *p < mf > p* *pp < mp > pp* *ppp < p > ppp*

Ob. *p < mf > p* *pp < mp > pp* *ppp < p > ppp*  
becoming brighter

B♭ Cl. *p < mf > p* *pp < mp > pp* *sub.mf* *f* *sub.mf*

B♭ Cl. *p < mf > p* *pp < mp > pp* *ppp < p > ppp*  
becoming brighter

Bsn. *mf* *pp < mp > pp* *f* *sub.mf*

Bsn. *p < mf > p* *pp < mp > pp* *ppp < p > ppp*

Hn. 1+3 *mp* *sub.mp* *mf*

Hn. 2+4 *mp* *sub.mp* *mf*

C Tpt. 1

C Tpt. 2+3 *p < mf > p* *pp < mp > pp* *ppp < p > ppp*  
senza sord.

Tbn. 1+2 *p < mf > p* *pp < mp > pp* *ppp < p > ppp*

B. Tbn. *p < mf > p* *pp < mp > pp* *ppp < p > ppp*

Tba. *p < mf > p* *pp < mp > pp* *ppp < p > ppp*

Perc. 1 *Vib.*

Perc. 2 *T-r* [Tam-tam] from Perc. 3 [Triangle] *mp* *p*

Perc. 3 *Glock.* *f* *tr.* *mp* *pp*

Timp.

Hp.

Pno.

Vln. I *148* *tutti* *div.* *tr.* *pppp* *ppp* *poco rit.* ..... *molto rit.*

Vln. II *tutti* *div.* *tr.* *pppp* *ppp* *con sord.*

Vla. *tutti* *div.* *tr.* *pppp* *ppp* *div. con sord.*

Vc. *tutti* *div.* *tr.* *pppp* *ppp* *tutti con sord.*

Cb. *tutti* *div.* *tr.* *pppp* *ppp* *tutti div. con sord.*

*ppp*

155 A tempo (♩=78) 159

Fl. *p* *mp* *p*

Picc. *p* *mp* *p*

Ob. *p* *mp* *p*

Ob. *p* *mp* *p*

B♭ Cl. *mp* *p* *mp* *p*

B♭ Cl. *mp* *mf*

Bsn. *mp* *ten.*

Bsn. *mp* *ten.*

4/8

Hn. 1+3 *mp* *p* *pp*

Hn. 2+4 *mp* *p* *pp*

C Tpt. 1 *pp* *cup mute* *mp* *p*

C Tpt. 2+3 *pp* *cup mute* *mp* *p*

Tbn. 1+2

B. Tbn.

Tba.

Perc. 1 *Vib.* *p* *tr.*

Perc. 2 *Tg.*

Perc. 3 *Glk.* *Bass Drum* *ppp*

Timp.

Hp.

Pno.

4/8

155 A tempo (♩=78) 159

Vln. I

Vln. II *t* *ppp*

Vla. *t* *ppp*

Vc. *t* *ppp*

Cb. *t* *ppp*

165 Waning (suspended, non espressivo)

163

172

Fl.

Picc.

Ob.

Ob.

B♭ Cl.

E♭ Cl.

Bsn.

Bsn.

Hn. 1+3

Hn. 2+4

C Tpt. 1

C Tpt. 2+3

Tbn. 1+2

B. Tbn.

Tba.

Perc. 1  
Cr.

Perc. 2  
T<sub>g</sub>

Perc. 3  
B.D.

Timp.

Hp.

Pno.

**3** **4** **2** **6** **4**

*mp* *pp* *p* *mp* *mf* *pp*

*ten.*

*pp* *ppp*

*pp*

165 Waning (suspended, non espressivo)

163

Vln. I

Vln. II

Vla.

Vc.

Cb.

tutti  
senza sord.  
sul pont.

*pppp*

div.

*pppp*

*pppp*

173 177 poco rit. . . . .

Fl.

Picc.

Ob.

E.H.

B♭ Cl.

E♭ Cl.

Bsn.

Bsn.

Hn. 1+3

Hn. 2+4

C Tpt. 1

C Tpt. 2+3

Tbn. 1+2

B. Tbn.

Tba.

Perc. 1  
Cr.

Perc. 2  
T<sub>g</sub>

Perc. 3  
B.D.

Timp.

Hp.

Pno.

Vln. I

Vln. II

Vla.

Vc.

Cb.

*pp* *mf* *f* *pp* *p* *ppp*

*mf* *sub-pp* *mf* *f* *pp* *p* *fp*

*mp* *sub-ppp* *mfpp*

*ppp* *pp* *ppp*

non espressivo, gradually more expressive

non espressivo, gradually more expressive

4/8 3/8 4/8

4/8 3/8 4/8

173 177 poco rit. . . . .

183 Emergent, Undulating (♩=78)

181

Fl.

Picc.

Ob.

E.H.

B♭ Cl.

E♭ Cl.

Bsn. *mp* *ff*

Bsn. *mp* *ffpp* [Cbsn.]

Hn. 1+3

Hn. 2+4

C Tpt. 1

C Tpt. 2+3

Tbn. 1+2

B. Tbn.

Tba.

Perc. 1 *Cr.*

Perc. 2 *Tg.* *p* [Tam-tam] to Perc. 3

Perc. 3 *B.D.*

Timp.

Hp. *p*

Pno. *mp* Between D1-A1 white keys *pp* *ppp*

8<sup>a</sup> una corda

6 3 4 5 6

183 Emergent, Undulating (♩=78)

181

Cb. (1) *pppp* senza sord. sul pont. *gliss.*

Cb. (3+4) *pppp* senza sord. sul pont. *gliss.*

Cb. (4+5) *pppp* senza sord. sul pont. *gliss.*

*pppp*

190 193

Fl.

Picc.

Ob.

E.H.

B♭ Cl.

E♭ Cl.

Bsn.

Cbsn.

Hn. 1+3

Hn. 2+4

C Tpt. 1

C Tpt. 2+3

Tbn. 1+2

B. Tbn.

Tba.

Perc. 1  
Cr.

Perc. 2  
Sus. Cymb.

Perc. 3  
B.D.

Timp.

Hp.

Pno.

48

190 193 senza sord. sul pont.

Vc. (1)

Vc. (2+3)

Vc. (4+5)

Vc. (6+7)

Cb. (1)

Cb. (3+4)

Cb. (4+5)

pp > pppp < pp > pppp < pp > pppp

ppp senza sord. sul pont. gliss. gliss. gliss. pppp

pp senza sord. sul pont. gliss. gliss. pppp

pp senza sord. sul pont. gliss. gliss. pppp

pp senza sord. sul pont. gliss. gliss. pppp ord. ord. ord.

48

204

198

Fl.

Picc.

Ob.

E.H.

B♭ Cl.

E♭ Cl.

Bsn.

Cbsn.

4  
88

88

Hn. 1+3

Hn. 2+4

C Tpt. 1

C Tpt. 2+3

Tbn. 1+2

B. Tbn.

Tba.

Perc. 1  
*Crt.*

Perc. 2  
*Sus. Cymb.*

Perc. 3  
*T. 4.*

Timp.

Hp.

Pno.

4  
88

88

204

198

Vla. (1)

Vla. (2+3)

Vla. (4+5)

Vla. (6+7)

Vc. (1)

Vc. (2+3)

Vc. (4+5)

Vc. (6+7)

Cb. (1)

Cb. (3+4)

Cb. (4+5)

*sul pont.*

*pp*

*gliss.*

*pppp*

*p*

*mp*



214 217

Fl.  
Picc.  
Ob.  
E.H.  
B♭ Cl.  
E♭ Cl.  
Bsn.  
Cbsn.

Hn. 1+3  
Hn. 2+4  
C Tpt. 1  
Tbn. 1+2

Perc. 1  
Vib.  
Perc. 2  
Cr.  
Tg.  
Perc. 3  
T-l.  
Timp.  
Hp.  
Pno.

214 217

Vln. II (1)  
Vln. II (2+3)  
Vln. II (4+5)  
Vln. II (6+7)  
Vla. (1)  
Vla. (2+3)  
Vla. (4+5)  
Vla. (6+7)  
Vc. (1)  
Vc. (2+3)  
Vc. (4+5)  
Vc. (6+7)  
Cb. (1)  
Cb. (3+4)  
Cb. (4+5)

7/8 4/8

21 sul pont. gliss. p pp

Sus. Cymbal pp mp Chimes ppp Lr. Tam-tam, from Perc. 3

ord. espressivo (biting) ff

mf

229 Becoming tumultuous

222

Picc. *mp* *molto espressivo*

Ob. *p* *mp*

B♭ Cl. *p* *mp*

E♭ Cl. *mp* *molto espressivo*

Cbsn. *p* *mp*

Hn. 3 *p* *mp* *p*

Hn. 2+4 *p* *mp* *p*

C Tpt. 1 *p* *mp* *p*

C Tpt. 2+3 *p* *mp* *p* senza sord.

Tbn. 1+2 *p* *mp* *p*

B. Tbn. *p* *mp*

Perc. 2 *p*

Perc. 3 Bass Drum

Pno. *Lr.* *f* *Lr.* *ff* *Lr.*

222

Vln. I (1) *mp* *div. sul pont.* *gliss.* *ffz* *pp*

Vln. I (2+3) *mp* *div. sul pont.* *gliss.* *ffz* *pp*

Vln. I (4+5) *mp* *div. sul pont.* *gliss.* *ffz* *pp*

Vln. I (6+7) *mp* *div. sul pont.* *gliss.* *ffz* *pp*

Vln. II (1) *mf* *gliss.* *espressivo (biting) ord.* *ffz* *mp* *non vib. (lulled)*

Vln. II (2+3) *mf* *gliss.* *espressivo (biting) ord.* *ffz* *mp* *non vib. (lulled)*

Vln. II (4+5) *mf* *gliss.* *espressivo (biting) ord.* *ffz* *mp* *non vib. (lulled)*

Vln. II (6+7) *mf* *gliss.* *espressivo (biting) ord.* *ffz* *mp* *non vib. (lulled)*

Vla. (1) *mp* *non vib. (lulled)* *sim.* *ffz* *mp*

Vla. (2+3) *mp* *non vib. (lulled)* *sim.* *ffz* *mp*

Vla. (4+5) *mp* *non vib. (lulled)* *sim.* *ffz* *mp*

Vla. (6+7) *mp* *non vib. (lulled)* *sim.* *ffz* *mp*

Vc. (1) *mf* *mp* *sim.* *ffz* *mp*

Vc. (2+3) *mf* *mp* *sim.* *ffz* *mp*

Vc. (4+5) *mf* *mp* *sim.* *ffz* *mp*

Vc. (6+7) *mf* *mp* *sim.* *ffz* *mp*

Cb. (1) *mp* *mf* *mp* *ffz*

Cb. (3+4) *mp* *mf* *mp* *ffz*

Cb. (4+5) *mp* *mf* *mp* *ffz*

229 Becoming tumultuous

Vln. I *mp* *ord. molto espressivo* *div.* *tutti*

230

235

Picc. *f* *sub.p* *f* *sub.mp* *f* *mf*

Ob. *p* *mf* *p* *f* *p* *f* *p*

B♭ Cl. *p* *mf* *p* *f* *p* *f* *p*

E♭ Cl. *f* *sub.p* *f* *sub.mp* *f* *mf*

Bsn. *p* *mf* *p* *f* *p* *f* *p*

Cbsn. *p* *mf* *p* *f* *p* *f* *p*

Hn. 3 *p* *mf* *p* *f* *p* *f* *p*

Hn. 2+4 *p* *mf* *p* *f* *p* *f* *p*

C Tpt. 1+2 *p* *mf* *p* *f* *p* *f* *p*

Tbn. 1+2 *p* *mf* *p* *f* *p* *f* *p*

B. Tbn. *p* *mf* *p* *f* *p* *f* *p*

Tba. *p* *mf* *p* *f* *p* *f* *p*

Perc. 1 *Vib.*

Perc. 2 *T.c.*

Perc. 3 *B.D.*

Timp. *p* *mp* *p* *mf* *mp*

Vln. I *f* *sub.p* *f* *sub.mp* *mf* *mf* *mp*

Vln. II (1) *f* *mf* *cresc.* (div.) *trem. accel.*

Vln. II (2+3) *f* *mf* *cresc.* (div.) *trem. accel.*

Vln. II (4+5) *f* *mf* *cresc.* (div.) *trem. accel.*

Vln. II (6+7) *f* *mf* *cresc.* (div.) *trem. accel.*

Vla. (1) *f* *mf* *cresc.* (div.) *trem. accel.*

Vla. (2+3) *f* *mf* *cresc.* (div.) *trem. accel.*

Vla. (4+5) *f* *mf* *cresc.* (div.) *trem. accel.*

Vla. (6+7) *f* *mf* *cresc.* (div.) *trem. accel.*

Vc. *mp* *molto espressivo tutti sul tasto* *tasto* *gradually*

Vc. (1) *mf*

Vc. (2+3) *mf*

Vc. (4+5) *mf*

Vc. (6+7) *mf*

Cb. (1) *f* *mf* *cresc.* (div.)

Cb. (3+4) *f* *mf* *cresc.* (div.)

Cb. (4+5) *f* *mf* *cresc.* (div.)

3

4

ord. gradually sul tasto

3

4

tasto gradually

Raging! (molto espressivo)

poco rit. . . . .

A tempo

(if no factory whistle is available)  
stagger

(ossia)

(if no factory whistle is available)  
stagger

238

Fl. *p* *mf* *mp* *f* *ff* *mf* *f* *ff* *sub:ff* *cresc. molto*

Picc. *mp* *f* *cresc. molto*

Ob. *p* *mf* *mp* *f* *ff* *mf* *f* *ff* *sub:ff* *cresc. molto*

E.H. *p* *mf* *mp* *f* *ff* *mf* *f* *ff* *sub:ff* *cresc. molto*

B♭ Cl. *p* *mf* *mp* *f* *ff* *mf* *f* *ff* *sub:ff* *cresc. molto*

E♭ Cl. *mp* *f* *cresc. molto*

Bsn. *p* *mf* *mp* *f* *ff* *mf* *f* *ff* *sub:ff* *cresc. molto*

Chsn. *p* *mf* *mp* *f* *ff* *mf* *f* *ff* *sub:ff* *cresc. molto*

Hn. 1 *mf*

Hn. (1+3) *p* *mf* *mp* *f* *ff* *mf* *f* *ff* *sub:ff* *cresc. molto*

Hn. (2+4) *mf*

C.Tpt. (1+2) *mf* *f* *cresc. molto* *ff*

C.Tpt. (3) *p* *mf* *mp* *f* *ff* *mf* *f* *ff* *sub:ff* *cresc. molto*

Tbn. 1+2 *p* *mf* *mp* *f* *ff* *mf* *f* *ff* *sub:ff* *cresc. molto*

B. Tbn. *p* *mf* *mp* *f* *ff* *mf* *f* *ff* *sub:ff* *cresc. molto*

Tba. *p* *mf* *mp* *f* *ff* *mf* *f* *ff* *sub:ff* *cresc. molto*

Perc. S Dr. *pp* *cresc.* *f* *fff*

Perc. T-4 *mp* *fff*

Perc. B.D. *mf* *cresc.* *ff*

Timp. *mf* *cresc.* *f* *molto*

Hp. *fff*

Pno. *mp* *cresc.* *f* *fff*

Factory Whistle

Tam-tam

Bass Dr.

use wooden ends

Sus. Cymbal

whistle tone

Raging! (molto espressivo)

poco rit. . . . .

A tempo

(if no factory whistle is available)  
solo, non vib.

238

Vln. I *mf* *f* *cresc. molto* *gliss.* *fff*

Vln. II (1) *f* *fff*

Vln. II (2+3) *f* *fff*

Vln. II (4+5) *f* *fff*

Vln. II (6+7) *f* *fff*

Vla. (1) *f* *fff*

Vla. (2+3) *f* *fff*

Vla. (4+5) *f* *fff*

Vla. (6+7) *f* *fff*

Vc. *mf* *f* *cresc. molto* *fff*

Cb. (1) *f* *fff*

Cb. (2+3) *f* *fff*

Cb. (4+5) *f* *fff*

trem. accel



250 254

Fl. 1  
Fl. 2  
Ob. 1  
Ob. 2  
B♭ Cl.  
E♭ Cl.  
Bsn.  
Cbsn.

Hn. 1+3  
Hn. 2+4  
Hn. 4  
C Tpt. 1  
C Tpt. 2+3  
Hn. 2  
Tbn. 1+2  
B. Tbn.  
Tba.

Perc. 1 F.W.  
Perc. 2 T.  
Perc. 3 B.D.  
Timp.  
Hp.  
Pno.

Vln. I (1+2)  
Vln. I (3+4)  
Vln. I (5)  
Vln. I (6+7)  
Vln. II (1)  
Vla. (1)  
Vc. (1)  
Cb.

3/8 2/8 1/8 4/8 1/8 4/8 3/8 4/8

3/8 2/8 1/8 4/8 1/8 4/8 3/8 4/8

con sord. duo  
con sord. solo  
con sord. solo

*pp*  
*p*  
*p*  
*p*  
*p*  
*p*  
*p*

*mf*  
*mf*  
*mf*  
*mf*  
*mf*  
*mf*  
*mf*

non espressivo  
gradually

non espressivo  
gradually

non espressivo  
gradually

non espressivo  
gradually

263 Peaceful (sustained, poco espressivo)

259

Fl. 1 & 2: *p* → *mp* → *mf*

Ob. 1 & 2: *p* → *mp* → *mf*

B♭ Cl. 1 & 2: *p* → *mp* → *mf*

E♭ Cl. 1 & 2: *p* → *mp* → *mf*

Bsn.: *p* → *mp* → *mf*

Cbsn.: *p* → *mp* → *mf*

Hn. 1+3: *mfpp* → *p*

Hn. 2+4: *mfpp* → *p*

C Tpt. 1: *mfpp* → *p*

C Tpt. 2+3: *mfpp* → *p*

Tbn. 1+2: *mfpp* → *p*

B. Tbn.: *mfpp* → *p*

Tba.: *mfpp* → *p*

Perc. 1 (F.W.): *mfpp* → *p*

Perc. 2 (T-L): *mfpp* → *p*

Perc. 3 (B.D.): *mfpp* → *p*

Timp.: *mfpp* → *p*

Hp.: *mfpp* → *p*

Pno.: *mfpp* → *p*

Vln. I (1+2): *subp* → *f* → *mp* → *mp* → *p*

Vln. II (1): *subp* → *f* → *mp* → *mp* → *p*

Vln. II (2+3): *p* → *mp*

Vln. II (4+5): *p* → *mp*

Vln. II (6+7): *p* → *mp*

Vla. (1): *subp* → *f* → *mp* → *mp* → *p*

Vla. (2+3): *p* → *mp*

Vla. (4+5): *p* → *mp*

Vla. (6+7): *p* → *mp*

Vc. (1): *subp* → *f* → *mp* → *mp* → *p*

Cb. (3+4): *subp* → *f* → *mp* → *mp* → *p*

4/8 5/8 7/8 4/8 3/8

263 Peaceful (sustained, poco espressivo)

poco rit. 272

267

Fl. *ppp*

Ob. *ppp*

B♭ Cl. *ppp*

E♭ Cl. *ppp*

Bsn. *ppp*

Cbsn.

**4/8**

Hn. 1+3 *pp* *mf* *ppp* *dim.* *ord. 2.* *n*

Hn. 2+4 *ppp* *n*

C Tpt. 1 *pp* *mf* *ppp* *dim.* *n*

C Tpt. 2+3 *pp* *mf* *ppp* *dim.* *n*

Hn. 2

Tbn. 1+2 *pp* *mf* *ppp* *dim.* *n*

B. Tbn.

Tba.

Perc. 1 F.W.

Bass Marimba

Perc. 2 B.Mar. *p*

Perc. 3 B.D.

Timp.

Hp. *p*

Pno. *pp* *mp* *pp* *Ln.* *ten. (slight bold)* *\* hold until piano is no longer audible* *n*

*Ln.* *una corda*

**4/8**

Vln. I (1+2) *mf* *pp* *non vib.* *n*

Vln. II (1) *mf* *pp* *non vib.* *n*

Vla. (1) *mf* *pp* *non vib.* *n*

Vc. (1) *mf* *pp* *non vib.* *n*

Cb. (1+2) *pppp* *con sord.* *n*

Cb. (3+4) *pppp* *con sord.* *n*

**3/4**

poco rit. 272